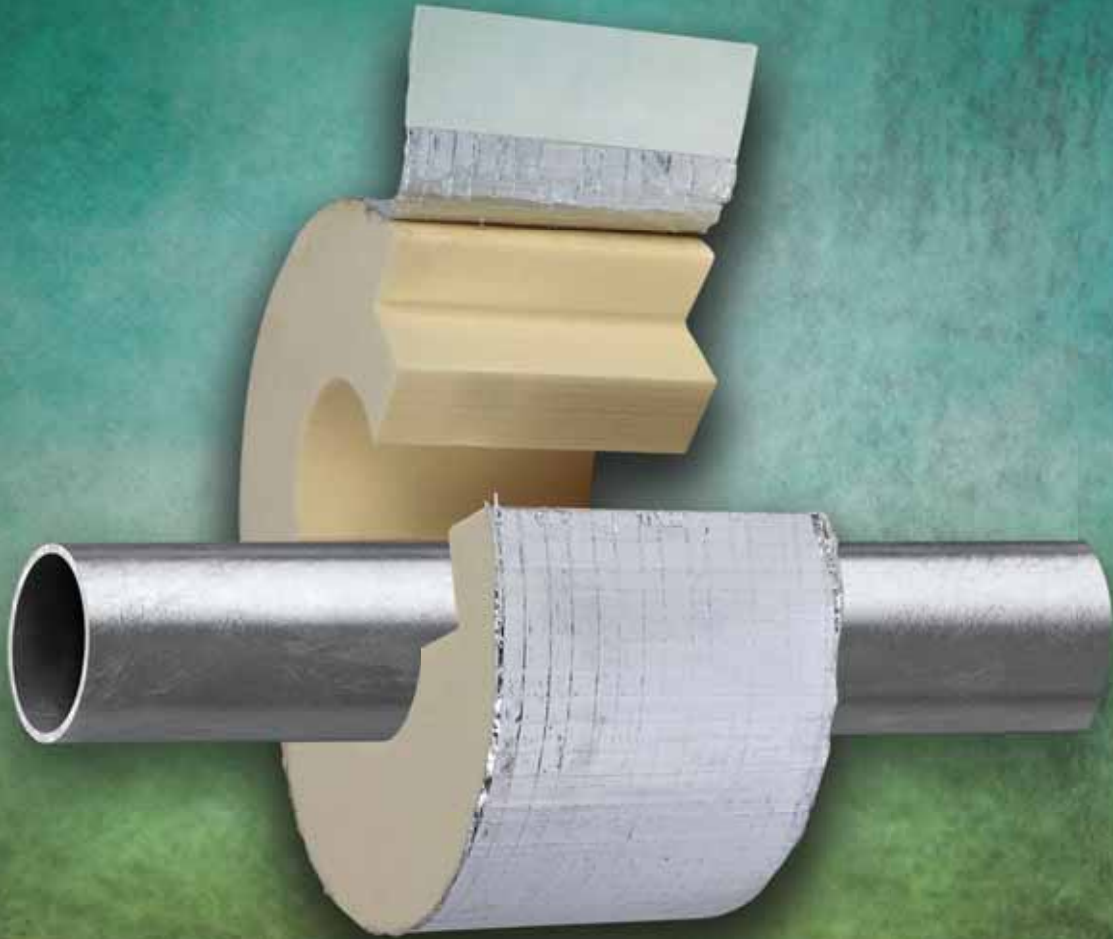


walraven

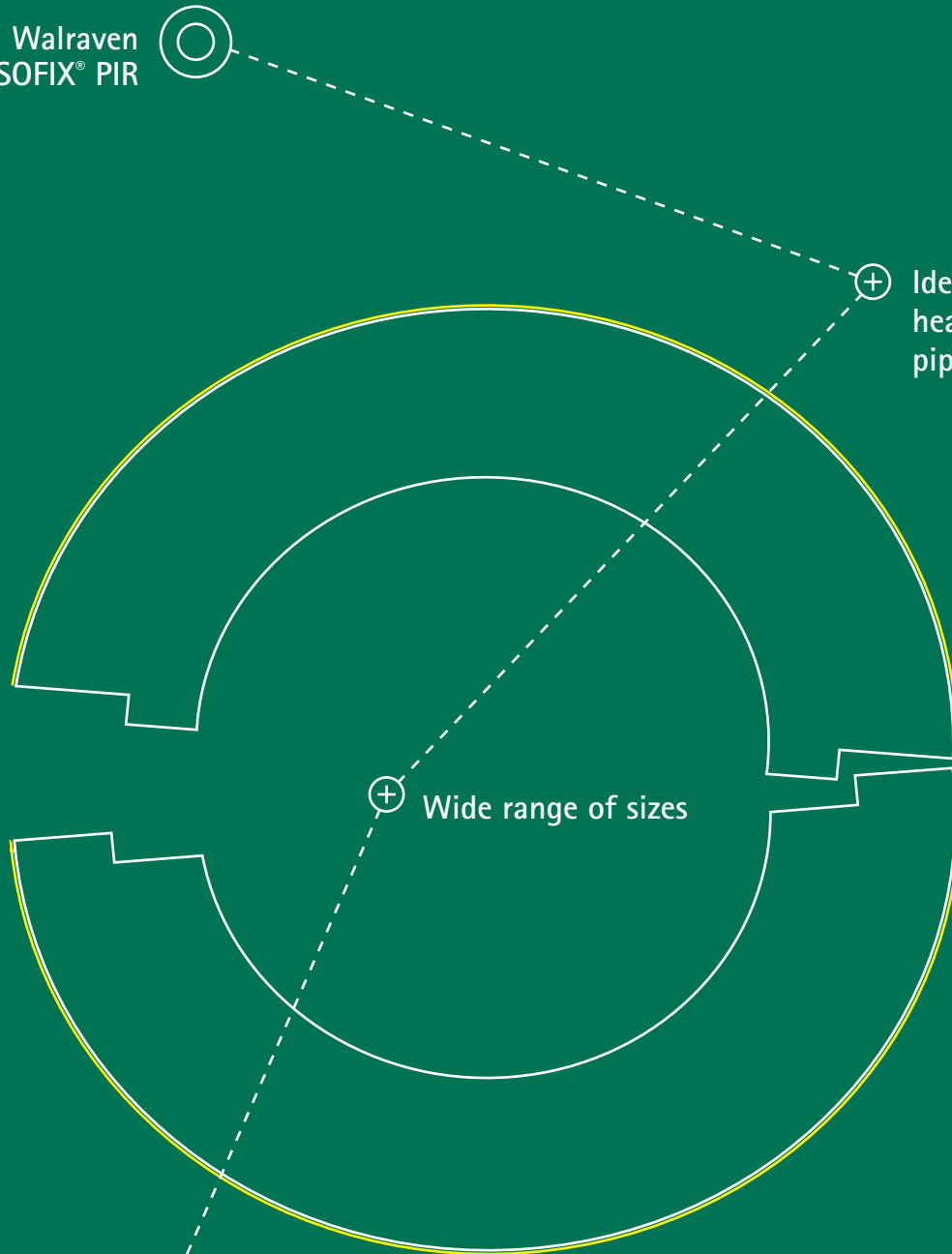
Hot or cold,
we've got you covered!



Walraven BISOFIX[®] PIR

For pipes that are fitted with PIR rigid foam insulation

Walraven
BISOFIX® PIR



⊕ Ideal insulator for heating and cooling pipes

⊕ Wide range of sizes

⊕ Glass fibre reinforced aluminium cover

⊕ Segments with pre-shaped edges for better closure

Inspired by smart solutions from the start

Walraven is your global partner in the installation market, founded in 1942. We have always been dedicated to making our clients' work easier, more effective, safer and more sustainable. With simple and smart solutions, comprehensive services and excellent support.

Walraven. The value of smart

Walraven BISOFIX® PIR20

For insulated pipes 12.0 – 273.1 mm



Product information

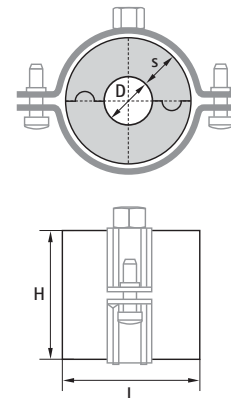
The insulated pipe support consists of two identical segments, made of PIR rigid foam. These two parts are covered with glass fibre reinforced aluminium tape. They have a self-adhesive closing. The self-adhesive strip at the tip of the foil forms a quick and solid vapour proof barrier. During installation the joints between the insulating pipe supports and the pipe sections have to be sealed using aluminium tape.

Product details

Part No.	D (mm)	L (mm)	H (mm)	s (mm)	F _{a,z} (N)	Pack 1
I200000012	12.0	75	52.0	20.0	120	25
I200000015	15.0 - 16.0	75	55.0	20.0	160	25
I200000018	17.2 - 18.0	75	58.0	20.0	170	25
I200000020	20.0	75	60.0	20.0	180	25
I200000022	21.3 - 22.0	75	62.0	20.0	180	25
I200000025	25.0	75	65.0	20.0	190	25
I200000028	26.9 - 28.0	75	68.0	20.0	200	25
I200000032	32.0	75	72.0	20.0	210	25
I200000034	33.7 - 35.0	75	75.0	20.0	220	25
I200000040	40.0	75	80.0	20.0	260	25
I200000042	42.4	75	82.4	20.0	280	25
I200000048	48.3	75	88.3	20.0	300	25
I200000050	50.0	75	90.0	20.0	310	25
I200000054	54.0	75	94.0	20.0	320	25
I200000057	56.0 - 57.0	75	97.0	20.0	330	25
I200000060	60.3	75	100.3	20.0	340	25
I200000064	64.0	75	104.0	20.0	350	25
I200000070	70.0	75	110.0	20.0	370	25
I200000076	76.1	75	116.1	20.0	390	25
I200000089	88.9	75	128.9	20.0	430	25
I200000102	101.6	75	141.6	20.0	450	25
I200000108	108.0	75	148.0	20.0	500	25
I200000114	114.3	100	154.3	20.0	1,110	15
I200000133	133.0	100	173.0	20.0	1,360	5
I200000140	139.7	100	179.7	20.0	1,410	5
I200000160	159.0 - 160.0	100	200.0	20.0	1,520	5
I200000168	168.3	100	208.3	20.0	1,570	5
I200000219	219.1	100	259.1	20.0	1,620	8
I200000273	273.1	100	313.0	20.0	1,670	2

Features

- Insulation shell with glass fibre reinforced aluminium foil with self-adhesive closing
- For fast fixing of rigid foam insulated pipes
- Vapour proof fitting prevents thermal bridge
- Material: PIR thermally hardening foam
- Density: 80 kg/m³ and 120 kg/m³
- Block length: 75mm up to 100mm
- λ (W/mK) - 0.021 - 0.040
- Working temperature from -45°C up to +105°C
- Water vapour resistance μ > 7,000
- Fire rating: class B2



The final thermal insulation value of the insulated pipe support combined with the load bearing capacity make PIR insulating pipe supports a quick and efficient solution.

Walraven BISOFIX® PIR30

For insulated pipes 12.0 – 323.9 mm



Product information

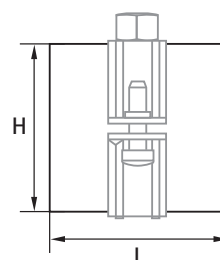
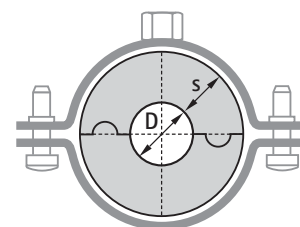
The Walraven BISOFIX® PIR30 consist of two 30mm thick identical segments, that are made of PIR rigid foam. These two parts are covered with glass fibre reinforced aluminium tape. They have a self-adhesive closing. The self-adhesive strip at the tip of the foil forms a quick and solid vapour proof barrier. During installation the joints between the insulating pipe supports and the pipe sections have to be sealed using aluminium tape.

Product details

Part No.	D (mm)	L (mm)	H (mm)	s (mm)	Fa,z (N)	Pack 1
I300000012	12.0	75	72.0	30.0	130	25
I300000015	15.0 - 16.0	75	75.0	30.0	170	25
I300000018	17.2 - 18.0	75	78.0	30.0	190	25
I300000022	21.3 - 22.0	75	82.0	30.0	230	25
I300000028	26.9 - 28.0	75	88.0	30.0	300	25
I300000034	33.7 - 35.0	75	95.0	30.0	320	25
I300000042	42.4	75	102.4	30.0	350	25
I300000048	48.3	75	108.3	30.0	370	25
I300000054	54.0	75	114.0	30.0	380	25
I300000057	56.0 - 57.0	75	117.0	30.0	390	25
I300000060	60.3	75	120.3	30.0	410	25
I300000064	64.0	75	124.0	30.0	420	25
I300000070	70.0	75	130.0	30.0	440	25
I300000076	76.1	75	136.1	30.0	460	25
I300000089	88.9	75	148.9	30.0	500	15
I300000102	101.6	100	161.6	30.0	550	15
I300000108	108.0	100	168.0	30.0	620	15
I300000114	114.3	100	174.3	30.0	1,370	15
I300000133	133.0	100	193.0	30.0	1,520	5
I300000140	139.7	100	199.7	30.0	1,570	5
I300000160	159.0 - 160.0	100	220.0	30.0	1,720	5
I300000168	168.3	100	228.3	30.0	2,720	8
I300000219	219.1	150	279.1	30.0	4,210	2
I300000273	273.1	150	333.0	30.0	5,020	2
I300000324	323.9	150	384.0	30.0	5,790	2

Features

- Insulation shell with glass fibre reinforced aluminium foil with self-adhesive closing
- For fast fixing of rigid foam insulated pipes
- Vapour proof fitting prevents thermal bridge
- Material: PIR thermally hardening foam
- Density: 80 kg/m³ and 120 kg/m³
- Block length: 75mm up to 150mm
- λ (W/mK) - 0.021 - 0.040
- Working temperature from -45°C up to +105°C
- Water vapour resistance $\mu > 7,000$
- Fire rating: class B2



Quick and efficient

Walraven BISOFIX® PIR40

For insulated pipes 12.0 – 406.4mm



Product information

The Walraven BISOFIX® PIR40 consist of two 40mm thick identical segments, that are made of PIR rigid foam. These two parts are covered with glass fibre reinforced aluminium tape. They have a self-adhesive closing. The self-adhesive strip at the tip of the foil forms a quick and solid vapour proof barrier. During installation the joints between the insulating pipe supports and the pipe sections have to be sealed using aluminium tape.

Product details

Part No.	D (mm)	L (mm)	H (mm)	s (mm)	F _{a,z} (N)	Pack 1
I40000012	12.0	75	92.0	40.0	300	25
I40000015	15.0 - 16.0	75	95.0	40.0	320	25
I40000018	17.2 - 18.0	75	98.0	40.0	340	25
I40000020	20.0	75	100.0	40.0	340	25
I40000022	21.3 - 22.0	75	102.0	40.0	350	25
I40000025	25.0	75	105.0	40.0	350	25
I40000028	26.9 - 28.0	75	108.0	40.0	350	25
I40000032	32.0	75	112.0	40.0	370	25
I40000034	33.7 - 35.0	75	115.0	40.0	370	25
I40000040	40.0	75	120.0	40.0	400	25
I40000042	42.4	75	122.4	40.0	410	25
I40000048	48.3	75	128.3	40.0	430	25
I40000054	54.0	75	134.0	40.0	440	25
I40000057	56.0 - 57.0	75	137.0	40.0	460	25
I40000060	60.3	75	140.3	40.0	470	25
I40000064	64.0	75	144.0	40.0	490	25
I40000070	70.0	75	150.0	40.0	510	15
I40000076	76.1	75	156.1	40.0	530	15
I40000089	88.9	75	168.9	40.0	620	15
I40000102	101.6	100	181.6	40.0	650	15
I40000108	108.0	100	188.0	40.0	690	15
I40000114	114.3	100	194.3	40.0	1,530	5
I40000133	133.0	100	213.0	40.0	1,670	5
I40000140	139.7	100	219.7	40.0	1,730	5
I40000160	159.0 - 160.0	100	240.0	40.0	2,850	8
I40000168	168.3	100	248.3	40.0	2,960	8
I40000219	219.1	150	299.1	40.0	4,510	2
I40000273	273.1	150	353.0	40.0	5,320	2
I40000324	323.9	150	404.0	40.0	6,090	2
I40000406	406.4	150	486.4	40.0	6,150	2



*"Useful product,
easy to install"*

Robert Veerhuis

Walraven BISOFIX® PIR50

For insulated pipes 12.0 – 406.4mm



Product information

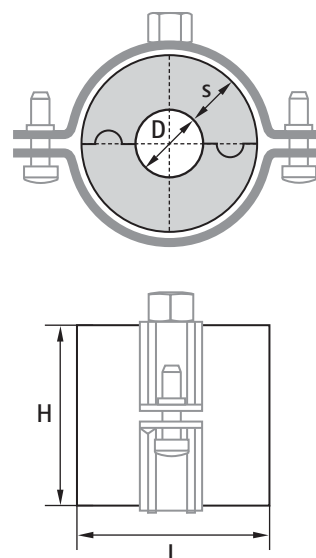
For heavy applications and materials with high insulation value, the BISOFIX® PIR50 are recommended. Two identical PIR rigid foam segments are covered with glass fibre reinforced aluminium tape. They have a self-adhesive closing. The self-adhesive strip at the tip of the foil forms a quick and solid vapour proof barrier. During installation the joints between the insulating pipe supports and the pipe sections have to be sealed using aluminium tape.

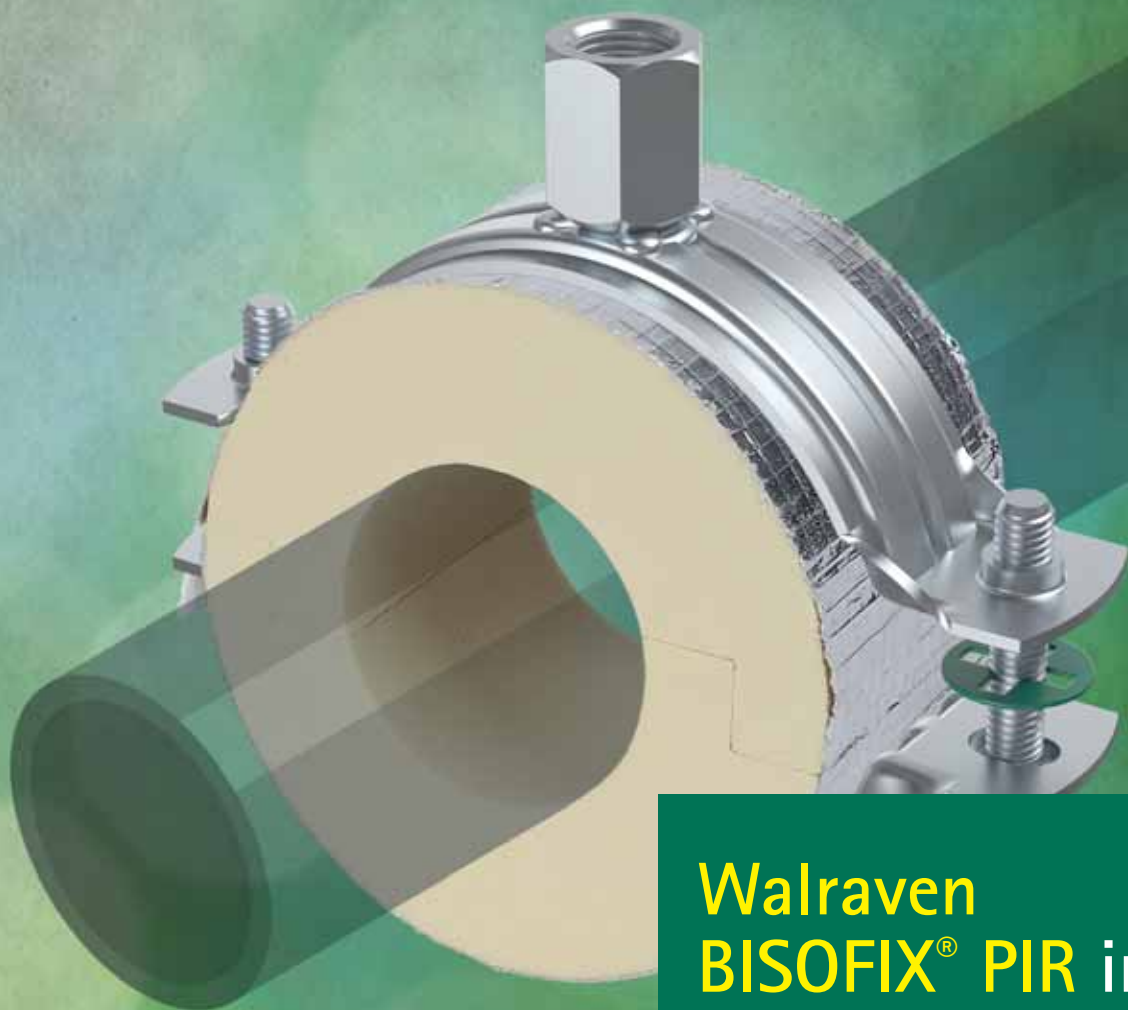
Product details

Part No.	D (mm)	L	H (mm)	s (mm)	F _{a,z} (N)	Pack 1
I500000012	12,0	75 mm	112,0	50	220	25
I500000015	15,0 - 16,0	75 mm	115,0	50	250	25
I500000018	17,2 - 18,0	75 mm	118,0	50	300	25
I500000020	20,0	75 mm	120,0	50	340	25
I500000022	21,3 - 22,0	75 mm	122,0	50	340	25
I500000025	25,0	75 mm	125,0	50	350	25
I500000028	26,9 - 28,0	75 mm	128,0	50	350	25
I500000032	32,0	75 mm	132,0	50	370	25
I500000034	33,7 - 35,0	75 mm	135,0	50	370	25
I500000040	40,0	75 mm	140,0	50	440	25
I500000042	42,4	75 mm	142,4	50	470	25
I500000048	48,3	75 mm	148,3	50	500	15
I500000050	50,0	75 mm	150,0	50	510	15
I500000054	54,0	75 mm	154,0	50	520	15
I500000057	56,0 - 57,0	75 mm	157,0	50	520	15
I500000060	60,3	75 mm	160,3	50	540	15
I500000064	64,0	75 mm	164,0	50	550	15
I500000070	70,0	75 mm	170,0	50	600	15
I500000076	76,1	75 mm	176,1	50	650	15
I500000089	88,9	75 mm	188,9	50	690	15
I500000102	101,6	100 mm	201,6	50	720	5
I500000108	108,0	100 mm	208,0	50	760	5
I500000114	114,3	100 mm	214,3	50	1.680	5
I500000133	133,0	100 mm	233,0	50	2.780	8
I500000140	139,7	100 mm	239,7	50	2.860	8
I500000160	159,0 - 160,0	100 mm	260,0	50	3.090	8
I500000168	168,3	100 mm	268,3	50	3.200	8
I500000219	219,1	150 mm	319,1	50	4.810	2
I500000273	273,1	150 mm	373,1	50	5.620	2
I500000324	323,9	150 mm	424,0	50	6.390	2
I500000406	406,4	150 mm	506,4	50	6.410	2

Features

- Insulation shell with glass fibre reinforced aluminium foil with self-adhesive closing
- For fast fixing of rigid foam insulated pipes
- Vapour proof fitting prevents thermal bridge
- Material: PIR thermally hardening foam
- Density: 80 kg/m³ and 120 kg/m³
- Block length: 75mm up to 150mm
- λ (W/mK) - 0.021 - 0.040
- Working temperature from -45°C up to +105°C
- Water vapour resistance μ > 7,000
- Fire rating: class B2





Walraven BISOFIX[®] PIR in combination with different clamps

The right product combination of insulating pipe supports and fixing material provides the highest installation quality. For heavy outdoor applications, the insulating pipe supports are combined with Walraven HD 500 clamps. For both indoor and outdoor applications, the Walraven Bifix[®] G2 clamps deliver the perfect solution. If the installation is situated indoors and the specific environment does not demand higher specifications, then the Walraven 2S clamps will be an ideal solution. Always a smart solution to help you fix your insulated pipe.

Walaraven BISOFIX® PIR60

For insulated pipes 12.0 – 168.3 mm



Product information

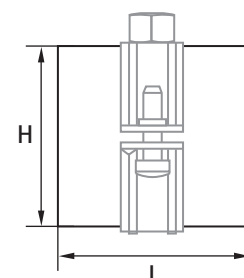
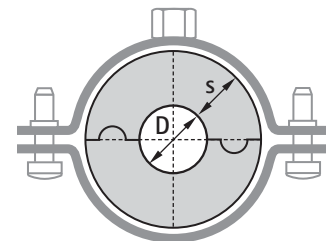
For applications requiring very high insulation value, the Walaraven BISOFIX PIR60 is recommended. The PIR rigid foam segments are covered with glass fibre-reinforced aluminium tape. They have a self-adhesive closing. The self-adhesive strip at the foil's tip forms a quick and solid vapour-proof barrier. During installation, the joints between the insulating pipe supports and the pipe sections must be sealed using aluminium tape.

Product details

Part No.	D (mm)	D (")	DN	L (mm)	H (mm)	s (mm)	Fa,Z (N)	Pack1
I600000012	12,0	-	-	75	132,0	60,0	250	25
I600000016	15,0 - 16,0	-	-	75	136,0	60,0	270	25
I600000018	17,2 - 18,0	3/8	10	75	138,0	60,0	310	25
I600000020	20,0	-	-	75	140,0	60,0	320	25
I600000022	21,3 - 22,0	1/2	15	75	142,0	60,0	350	25
I600000025	25,0	-	-	75	145,0	60,0	370	25
I600000028	26,9 - 28,0	3/4	20	75	148,0	60,0	380	15
I600000032	32,0	-	-	75	152,0	60,0	390	15
I600000035	33,7 - 35,0	1	25	75	155,0	60,0	400	15
I600000040	40,0	-	-	75	160,0	60,0	420	15
I600000042	42,4	1 1/4	32	75	162,0	60,0	500	15
I600000048	48,3	1 1/2	40	75	168,0	60,0	530	15
I600000050	50,0	-	-	75	170,0	60,0	540	15
I600000054	54,0	-	-	75	174,0	60,0	580	15
I600000057	56,0 - 57,0	-	-	75	177,0	60,0	600	15
I600000060	60,3	2	50	75	180,0	60,0	620	15
I600000064	64,0	-	-	75	184,0	60,0	640	15
I600000070	70,0	-	-	75	190,0	60,0	680	15
I600000076	76,1	2 1/2	65	75	196,0	60,0	720	15
I600000089	88,9	3	80	75	209,0	60,0	730	15
I600000102	101,6	-	-	75	222,0	60,0	760	15
I600000108	108,0	-	-	75	228,0	60,0	800	15
I600000114	114,3	4	100	75	234,0	60,0	1.790	5
I600000133	133,0	-	-	100	253,0	60,0	2.190	8
I600000140	139,7	5	125	100	260,0	60,0	2.280	8
I600000159	159,0	-	-	100	279,0	60,0	2.450	8
I600000168	168,3	6	150	100	288,0	60,0	2.620	8

Features

- Insulation shell with glass fibre reinforced aluminium foil with self-adhesive closing
- For fast fixing of rigid foam insulated pipes
- Vapour proof fitting prevents thermal bridge
- Material: PIR thermally hardening foam
- Density: 80 kg/m³ and 120 kg/m³
- PIR density for D > 110mm = 120kg/m³
- Block length: 75 mm up to 100 mm
- (W/mK) - 0.021 – 0.040
- Working temperature from -45°C up to +105°C
- Water vapour resistance $\mu > 7,000$
- Fire rating: class B2



Walraven BISOFIX® PIR80

For insulated pipes 88.9 – 120.0 mm



Product information

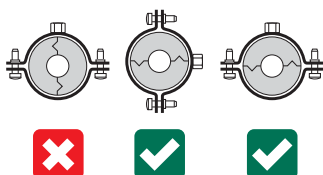
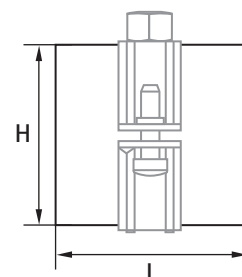
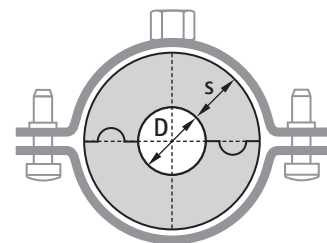
For applications requiring the highest insulation value, the Walraven BISOFIX PIR80 is recommended. The PIR rigid foam segments are covered with glass fibre-reinforced aluminium tape. They have a self-adhesive closing. The self-adhesive strip at the foil's tip forms a quick and solid vapour-proof barrier. During installation, the joints between the insulating pipe supports and the pipe sections must be sealed using aluminium tape.

Product details

Part No.	D (mm)	D (")	DN	L (mm)	H (mm)	s (mm)	F _{a,z} (N)	Pack 1
I800000089	88.9	3	80	75	249.0	80.0	800	5
I800000100	100.0	-	-	75	260.0	80.0	820	5
I800000114	114.3	4	100	75	274.0	80.0	1,860	5
I800000120	120.0	-	-	75	280.0	80.0	2,150	5

Features

- Insulation shell with glass fibre reinforced aluminium foil with self-adhesive closing
- For fast fitting of rigid foam insulated pipes
- Vapour proof fitting prevents thermal bridge
- Material: PIR thermally hardening foam
- Density: 80 kg/m³ and 120 kg/m³
- PIR density for D > 110mm = 120kg/m³
- Block length: 75mm up to 100mm
- (W/mK) - 0.021 – 0.040
- Working temperature from -45°C up to +105°C
- Water vapour resistance $\mu > 7,000$
- Fire rating: class B2



The right installation method delivers the best performance

Always make sure that you position the insulating pipe supports in the correct position.

Walraven BISOFIX® PIR Selection Chart

This chart is designed to help you select the right clamp and insulation block combination.

Walraven BISOFIX® PIR



- Recommended temperature
-45° C to +105° C

Walraven 2S Clamp



- 2 screw clamp
- Screws secured with anti-loss washer
- Zinc plated finish
- For dry, indoor environment (C1)

Walraven Bifix® G2 Clamp



- 2 screw clamp
- Quick closing mechanism
- BIS UltraProtect® 1000 (BUP) coating
- For wet, corrosive environment (C1-C4)

Walraven HD500 Clamp



- Heavy duty clamp
- CO₂ welded connection nut
- BIS UltraProtect® 1000 (BUP) coating
- For wet, corrosive environment (C1-C4)

Pipe diameter (mm)	Product Type	BISOFIX® PIR20	BISOFIX® PIR30	BISOFIX® PIR40	BISOFIX® PIR50	BISOFIX® PIR60	BISOFIX® PIR80
12.0	BISOFIX® PIR	I200000012	I300000012	I400000012	I500000012	I600000012	-
	2S Clamp	33035052	33035081	33035095	33035112	33035137	-
	Bifix® G2	3008052	3008070	3008091	3008115	-	-
	HD500	33038052	33048078	33048092	33048116	-	-
15.0	BISOFIX® PIR	I200000015	I300000015	I400000015	I500000015	-	-
	2S Clamp	33035061	33035081	33035095	33035118	-	-
	Bifix® G2	3008058	3008079	3008105	3008115	-	-
	HD500	33038058	33048078	33048092	33048116	-	-
15.0 - 16.0	BISOFIX® PIR	-	-	-	-	I600000016	-
	2S Clamp	-	-	-	-	33035137	-
	Bifix® G2	-	-	-	-	-	-
	HD500	-	-	-	-	-	-
17.2 - 18.0	BISOFIX® PIR	I200000018	I300000018	I400000018	I500000018	I600000018	-
	2S Clamp	33035061	33035081	33035103	33035118	33035144	-
	Bifix® G2	3008058	3008079	3008105	3008115	-	-
	HD500	33038058	33048078	33048106	33048123	-	-
20.0	BISOFIX® PIR	I200000020	I300000020	I400000020	I500000020	I600000020	-
	2S Clamp	33035061	33035081	33035103	33035127	33035144	-
	Bifix® G2	-	-	-	-	-	-
	HD500	-	-	-	-	-	-
21.3 - 22.0	BISOFIX® PIR	I200000022	I300000022	I400000022	I500000022	I600000022	-
	2S Clamp	33035061	33035087	33035103	33035127	33035144	-
	Bifix® G2	3008064	3008083	3008105	3008130	-	-
	HD500	33038065	33048085	33048106	33048123	-	-
25.0	BISOFIX® PIR	I200000025	I300000025	I400000025	I500000025	I600000025	-
	2S Clamp	33035067	33035087	33035112	33035127	33035153	-
	Bifix® G2	-	-	-	-	-	-
	HD500	-	-	-	-	-	-
26.9 - 28.0	BISOFIX® PIR	I200000028	I300000028	I400000028	I500000028	I600000028	-
	2S Clamp	33035067	33035095	33035112	33035137	33035153	-
	Bifix® G2	3008070	3008091	3008115	3008130	-	-
	HD500	33038071	33048092	33048116	33048133	-	-
32.0	BISOFIX® PIR	I200000032	I300000032	I400000032	I500000032	I600000032	-
	2S Clamp	33035074	33035095	33035112	33035137	33035153	-
	Bifix® G2	-	-	-	-	-	-
	HD500	-	-	-	-	-	-



Pipe diameter (mm)	Product Type	BISOFIX® PIR20	BISOFIX® PIR30	BISOFIX® PIR40	BISOFIX® PIR50	BISOFIX® PIR60	BISOFIX® PIR80
33.7 - 35.0	BISOFIX® PIR	I200000034	I300000034	I400000034	I500000034	I600000035	-
	2S Clamp	33035074	33035095	33035118	33035137	33035162	-
	Bifix® G2	3008079	3008091	3008115	3008140	-	-
	HD500	33048078	33048092	33048116	33048140	-	-
40.0	BISOFIX® PIR	I200000040	I300000040	I400000040	I500000040	I600000040	-
	2S Clamp	33035081	33035103	33035127	33035144	33035162	-
	Bifix® G2	-	-	-	-	-	-
	HD500	-	-	-	-	-	-
42.4	BISOFIX® PIR	I200000042	I300000042	I400000042	I500000042	I600000042	-
	2S Clamp	33035087	33035103	33035127	33035144	33035162	-
	Bifix® G2	3008083	3008105	3008130	3008140	-	-
	HD500	33048085	33048106	33048123	33048140	-	-
48.3	BISOFIX® PIR	I200000048	I300000048	I400000048	I500000048	I600000048	-
	2S Clamp	33035095	33035112	33035137	33035153	33035172	-
	Bifix® G2	3008091	3008115	3008130	3008140	-	-
	HD500	33048092	33048116	33048133	33048154	-	-
50.0	BISOFIX® PIR	I200000050	I300000050	-	I500000050	I600000050	-
	2S Clamp	33035095	33035112	-	33035153	33035172	-
	Bifix® G2	-	-	-	-	-	-
	HD500	-	-	-	-	-	-
54.0	BISOFIX® PIR	I200000054	I300000054	I400000054	I500000054	I600000054	-
	2S Clamp	33035095	33035118	33035137	33035162	33035183	-
	Bifix® G2	3008091	3008115	3008140	3008160	-	-
	HD500	33048092	33048116	33048133	33048154	-	-
56.0 - 57.0	BISOFIX® PIR	I200000057	I300000057	I400000057	I500000057	I600000057	-
	2S Clamp	33035103	33035118	33035137	33035162	33035183	-
	Bifix® G2	3008105	3008115	3008140	3008160	-	-
	HD500	33048106	33048116	33048140	33048154	-	-
60.0	BISOFIX® PIR	I200000060	I300000060	I400000060	I500000060	-	-
	2S Clamp	33035103	33035127	33035144	33035162	-	-
	Bifix® G2	3008105	3008130	3008140	3008160	-	-
	HD500	33048106	33048123	33048140	33048169	-	-
60.3	BISOFIX® PIR	-	-	-	-	I600000060	-
	2S Clamp	-	-	-	-	33035183	-
	Bifix® G2	-	-	-	-	-	-
	HD500	-	-	-	-	-	-

Walraven BISOFIX® PIR Selection Chart

This chart is designed to help you select the right clamp and insulation block combination.

Pipe diameter (mm)	Product Type	BISOFIX® PIR20	BISOFIX® PIR30	BISOFIX® PIR40	BISOFIX® PIR50	BISOFIX® PIR60	BISOFIX® PIR80
64.0	BISOFIX® PIR	I200000064	I300000064	I400000064	I500000064	I600000064	-
	2S Clamp	33035112	33035127	33035144	33035172	33035194	-
	Bifix® G2	3008105	3008130	3008140	3008169	-	-
	HD500	33048106	33048123	33048140	33048169	-	-
70.0	BISOFIX® PIR	I200000070	I300000070	I400000070	I500000070	I600000070	-
	2S Clamp	33035112	33035137	33035153	33035172	33035194	-
	Bifix® G2	3008115	3008130	3008160	3008169	-	-
	HD500	33048116	33048133	33048154	33048169	-	-
76.0	BISOFIX® PIR	I200000076	I300000076	I400000076	I500000076	-	-
	2S Clamp	33035118	33035137	33035162	33035183	-	-
	Bifix® G2	3008115	3008140	3008160	3008180	-	-
	HD500	33048116	33048140	33048154	33048183	-	-
76.1	BISOFIX® PIR	-	-	-	-	I600000076	-
	2S Clamp	-	-	-	-	33035205	-
	Bifix® G2	-	-	-	-	-	-
	HD500	-	-	-	-	-	-
88.9	BISOFIX® PIR	-	-	-	-	I600000089	I800000089
	2S Clamp	-	-	-	-	33035216	-
	Bifix® G2	-	-	-	-	-	-
	HD500	-	-	-	-	-	33068254
89.0	BISOFIX® PIR	I200000089	I300000089	I400000089	I500000089	-	-
	2S Clamp	33035137	33035153	33035172	33035194	-	-
	Bifix® G2	3008130	3008160	3008180	3008200	-	-
	HD500	33048133	33048154	33048169	33048183	-	-
100.0	BISOFIX® PIR	-	-	-	-	-	I800000100
	2S Clamp	-	-	-	-	-	-
	Bifix® G2	-	-	-	-	-	-
	HD500	-	-	-	-	-	33068264
101.6	BISOFIX® PIR	-	-	-	-	I600000102	-
	2S Clamp	-	-	-	-	33035225	-
	Bifix® G2	-	-	-	-	-	-
	HD500	-	-	-	-	-	-
102.0	BISOFIX® PIR	I200000102	I300000102	I400000102	I500000102	-	-
	2S Clamp	33035144	33035162	33035183	33035205	-	-
	Bifix® G2	3008140	3008160	3008180	3008200	-	-
	HD500	33048140	33048169	33048183	33048202	-	-
108.0	BISOFIX® PIR	I200000108	I300000108	I400000108	I500000108	I600000108	-
	2S Clamp	33035153	33035172	33035194	33035216	-	-
	Bifix® G2	3008160	3008169	3008200	3008210	-	-
	HD500	33048154	33048169	33048183	33048219	33068227	-
114.0	BISOFIX® PIR	I200000114	I300000114	I400000114	I500000114	-	-
	2S Clamp	33035162	33035183	33035194	33035216	-	-
	Bifix® G2	3008160	3008180	3008200	3008210	-	-
	HD500	33048154	33048183	33048202	33048219	-	-
114.3	BISOFIX® PIR	-	-	-	-	I600000114	I800000114
	2S Clamp	-	-	-	-	-	-
	Bifix® G2	-	-	-	-	-	-
	HD500	-	-	-	-	33068241	33068279

Pipe diameter (mm)	Product Type	BISOFIX® PIR20	BISOFIX® PIR30	BISOFIX® PIR40	BISOFIX® PIR50	BISOFIX® PIR60	BISOFIX® PIR80
120.0	BISOFIX® PIR	-	-	-	-	-	I800000120
	2S Clamp	-	-	-	-	-	-
	Bifix® G2	-	-	-	-	-	-
	HD500	-	-	-	-	-	33068289
133.0	BISOFIX® PIR	I200000133	I300000133	I400000133	I500000133	I600000133	-
	2S Clamp	33035183	33035194	33035216	-	-	-
	Bifix® G2	3008180	3008200	3008210	-	-	-
	HD500	33048183	33048202	33048219	33068241	33068254	-
139.7	BISOFIX® PIR	-	-	-	-	I600000140	-
	2S Clamp	-	-	-	-	-	-
	Bifix® G2	-	-	-	-	-	-
	HD500	-	-	-	-	33068264	-
140.0	BISOFIX® PIR	I200000140	I300000140	I400000140	I500000140	-	-
	2S Clamp	33035183	33035205	33035225	-	-	-
	Bifix® G2	3008180	3008200	3008225	-	-	-
	HD500	33048183	33048202	33048219	33068241	-	-
159.0	BISOFIX® PIR	-	-	-	-	I600000159	-
	2S Clamp	-	-	-	-	-	-
	Bifix® G2	-	-	-	-	-	-
	HD500	-	-	-	-	33068279	-
159.0 - 160.0	BISOFIX® PIR	I200000160	I300000160	I400000160	I500000160	-	-
	2S Clamp	33035205	33035225	-	-	-	-
	Bifix® G2	3008200	3008225	-	-	-	-
	HD500	33048202	33048219	33068241	33068264	-	-
168.3	BISOFIX® PIR	I200000168	I300000168	I400000168	I500000168	I600000168	-
	2S Clamp	33035216	-	-	-	-	-
	Bifix® G2	3008210	-	-	-	-	-
	HD500	33048219	33048227	33068254	33068279	33068289	-
219.0	BISOFIX® PIR	I200000219	I300000219	I400000219	I500000219	-	-
	2S Clamp	-	-	-	-	-	-
	Bifix® G2	-	-	-	-	-	-
	HD500	33068264	33068289	33068302	33068325	-	-
273.1	BISOFIX® PIR	I200000273	I300000273	I400000273	I500000273	-	-
	2S Clamp	-	-	-	-	-	-
	Bifix® G2	-	-	-	-	-	-
	HD500	33068325	33068325	33068360	33068374	-	-
323.9	BISOFIX® PIR	-	I300000324	I400000324	I500000324	-	-
	2S Clamp	-	-	-	-	-	-
	Bifix® G2	-	-	-	-	-	-
	HD500	-	33068389	33068408	33068436	-	-
406.4	BISOFIX® PIR	-	-	-	I500000406	-	-
	2S Clamp	-	-	-	-	-	-
	Bifix® G2	-	-	-	-	-	-
	HD500	-	-	-	33068509	-	-



Hot or cold, we've got you covered!

Every installation is different. Fortunately, Walraven understands the specific challenges that come with developing complex technical solutions and working at height.

In addition to a comprehensive range of robust, durable and easy-to-install product systems, our experts and engineers are always available to share their years of expertise and advise you on the safest, most durable and cost-effective solutions for your installation.

To find out how we can support you, visit [walraven.com/int/insulating-pipe-supports](https://www.walraven.com/int/insulating-pipe-supports)

The value of smart

Walraven BISOFIX® PIR

Features and benefits

Different sizes

- Available in thickness ranges from 20 mm up to 80 mm to suit different performance specifications
- Special sizes may be available on request

Moisture resistance

- Factory-applied foil covering acts as highly effective vapour barrier
- Stepped joints ensure vapour seal and accurate location
- Closed cell structure resists moisture absorption and mould



A smart solution for fixing insulated pipes

Walraven BISOFIX® PIR in combination with different clamps for indoor and outdoor applications

At Walraven, offering smart solutions starts with smart product designs and applications. The right product combination of insulating pipe supports and fixing material provides the highest installation quality you want to experience and present to your customers. Whether completing a job indoors or outdoors, the Walraven fixing materials that are offered in combination with the insulating pipe supports deliver the expected results.

For heavy outdoor applications, the insulating pipe supports are combined with Walraven HD 500 clamps. For both indoor and outdoor applications, the Walraven Bifix® G2 clamps deliver the perfect solution. If the installation is situated indoors and the specific environment does not demand higher specifications, then the Walraven 2S clamps will be an ideal solution.



- Walraven BISOFIX® PIR with 2S Clamp



- Walraven BISOFIX® PIR with Bifix® G2 Clamp



- Walraven BISOFIX® PIR with HD 500 Clamp

Find out how we can support you

Would you like to find out more about any of the solutions described in this brochure?
Or would you like to discuss how we could help you find the best possible solution for your project? Get in touch today!

Other countries

Walraven International

Industrieweg 5
3641 RK Mijdrecht (NL)
Tel. +31 297 23 30 00
Fax +31 297 23 30 99
export@walraven.com

Walraven Group

Mijdrecht (NL) · Tienen (BE) · Bayreuth (DE) · Banbury (GB) · Malmö (SE) · Grenoble (FR) · Barcelona (ES) · Milan (IT)
Kraków (PL) · Mladá Boleslav (CZ) · Kyiv (UA) · Danville (US) · Shanghai (CN) · Dubai (AE) · Budapest (HU) · Mumbai (IN)
Singapore (SG) · Burlington (CA)

BISOPIX PIR (EN-INT) – 02/2025 – PDF – Full content subject to modifications
* The technical data are non-binding and do not reflect the warranted characteristics of the products. They are subject to change. Please consult our General Terms and Conditions. Additional information is available upon request. It is the designer's responsibility to select products suitable for the intended purpose and to ensure that performance data are not exceeded. The installation instructions should always be read and followed.

